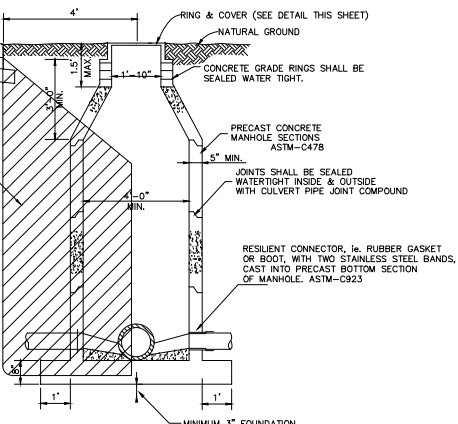
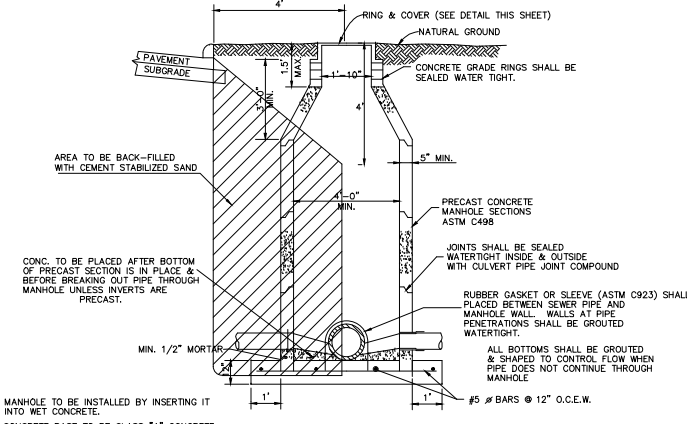
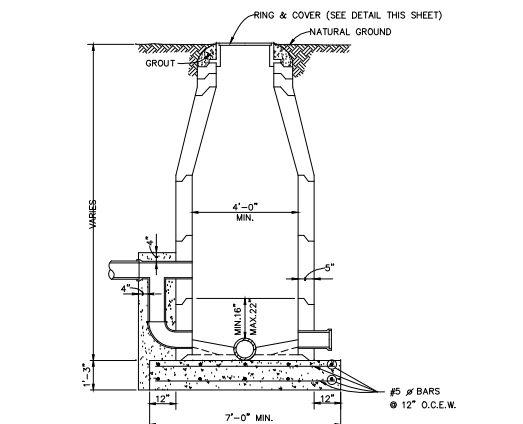
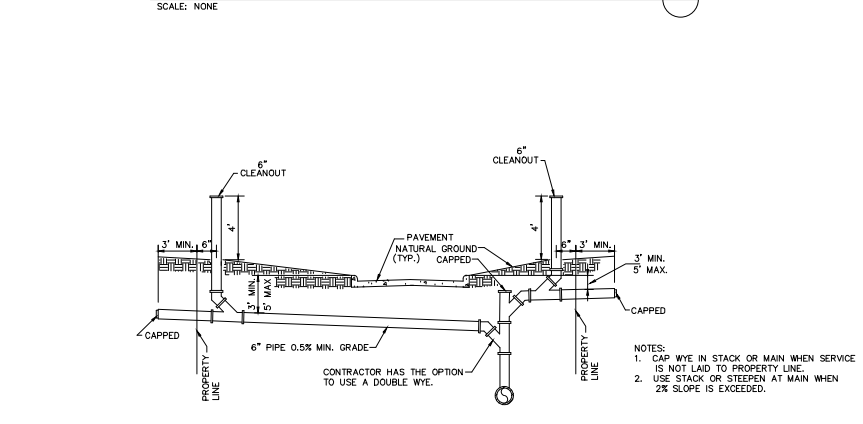
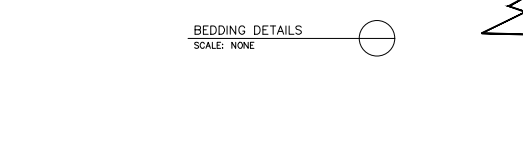
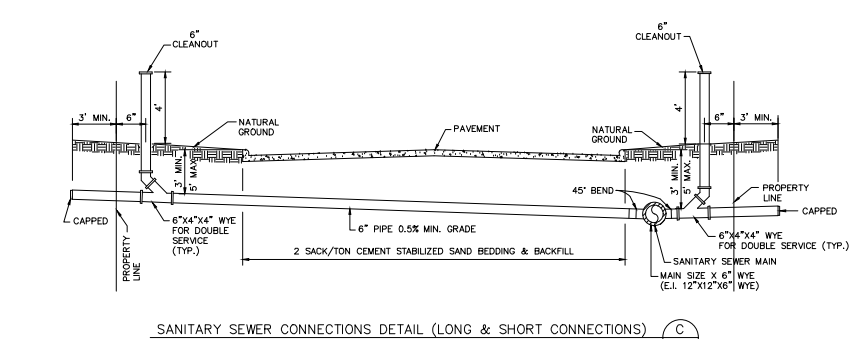
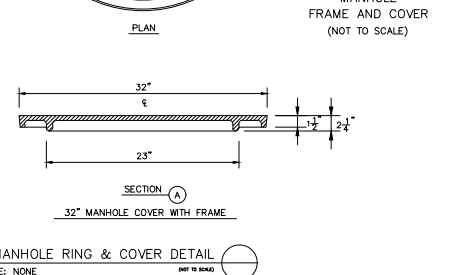
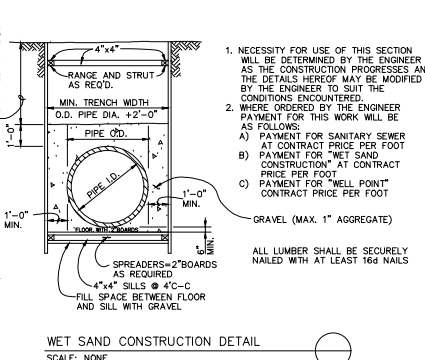


★EACH UTILITY SHALL BE MARKED BY MEANS OF DIRECT BURIAL OF THE APPROPRIATE COLOR-CODED DETECTABLE, UNDERGROUND UTILITY MARKING TAPE. THE BURIAL DEPTH OF THE TAPE SHALL NOT BE AT AN ELEVATION OF LESS THAN 12 INCHES ABOVE THE UTILITY LINE.



- NOTES
1. BACKFILL UNIFORMLY AROUND MANHOLE UNLESS MP IS UNDER PAVEMENT, THEN 2 SK/TON CEMENT STABILIZED SAND WILL BE REQUIRED.
 2. ALL MANHOLES SHALL HAVE STAINLESS STEEL MANHOLE COVER INSERTS.
 3. ALL EXCAVATIONS WITHIN 4' OF BACK-OF-CURB SHALL BE BACKFILLED & COMPACTED WITH CEMENT STABILIZED SAND 1.5 SK/TON.
 4. MANHOLES SHALL BE SET ON A SOLID LEVEL & STABLE FOUNDATION OTHER CEMENT STABILIZED SAND 1.5 SK/TON, MIN. 3", (KEPT DRY UNTIL IT HAS SET UP). UNSTABLE SUBGRADE TREATMENT SHALL BE APPROVED BY THE CITY ENGINEER.

CITY OF DEER PARK
STANDARD SANITARY SEWER DETAILS