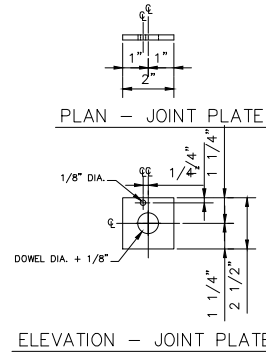
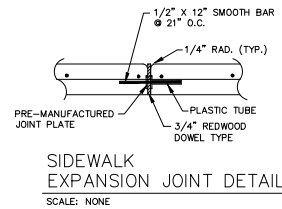
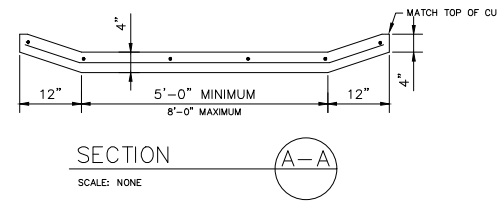
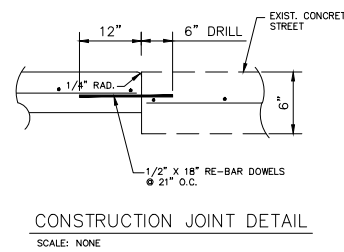


- NOTES:
- DUMMY CONSTRUCTION JOINTS ARE TO BE SPACED ON 6'-0" CTR.-CTR.
  - EXPANSION JOINTS ARE TO HAVE A MAXIMUM SPACING OF 30'-0" CTR.-CTR. AT INTERSECTIONS OR AS DIRECTED BY THE ENGINEER.
  - ALL NEW SIDEWALK SHALL BE DOWELED INTO EXIST. PAVEMENT, DRIVEWAYS, & SIDEWALK ALL EDGES AND JOINTS TO BE EDGED.
  - SIDEWALK SHALL BE 1" TO 6" ABOVE TOP OF CURB, OR AS APPROVED BY THE CITY ENGINEER.



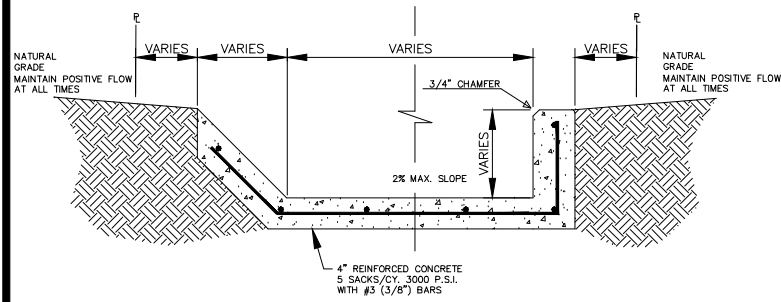
CONNECTION TO EXISTING SIDEWALK OR DRIVEWAY  
SCALE: NONE



SIDEWALK EXPANSION JOINT DETAIL  
SCALE: NONE

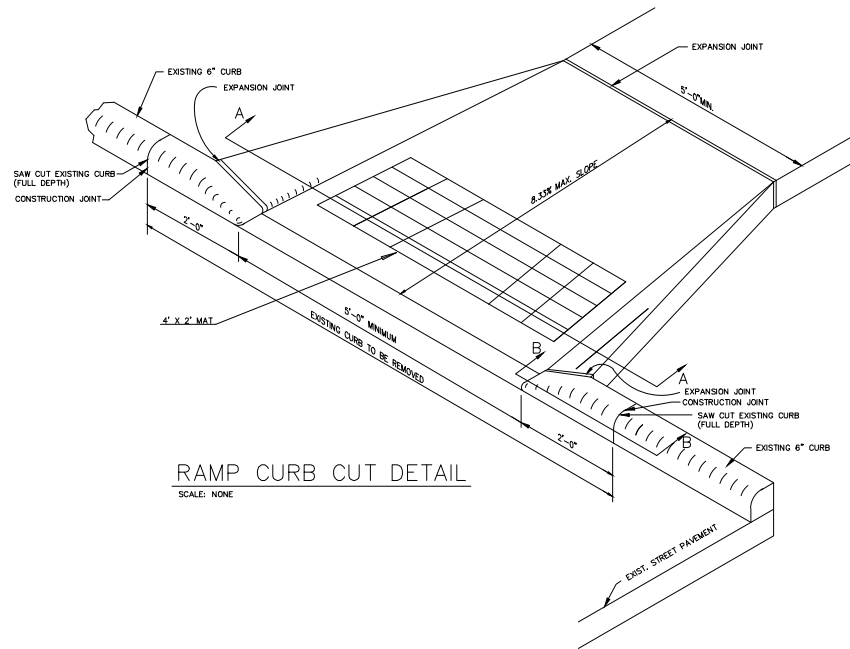
CONCRETE SIDEWALK DETAILS

SCALE: NONE



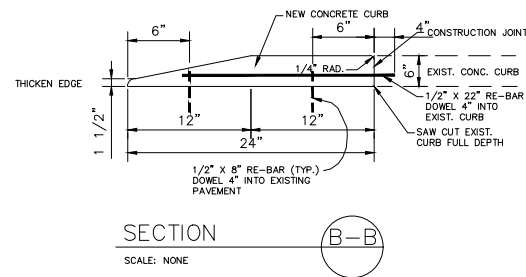
FLARED/STRAIGHT WALL DETAIL

SCALE: NONE



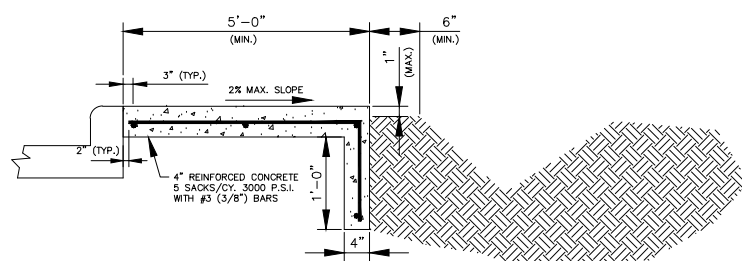
RAMP CURB CUT DETAIL

SCALE: NONE

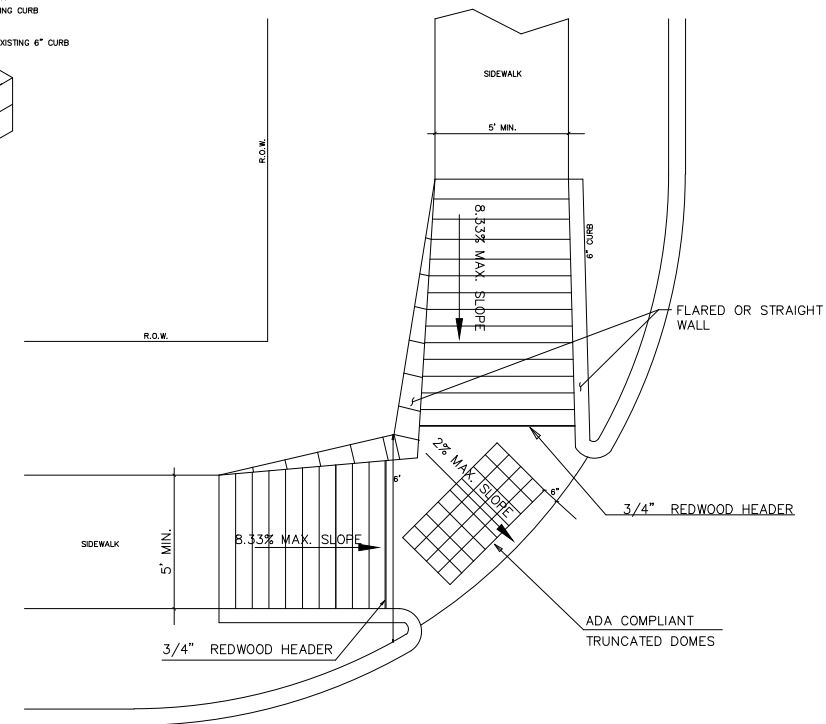


SECTION B-B

SCALE: NONE



SIDEWALK SECTION @ DITCH/SWALE



CURB/CORNER RAMP DETAILS

SCALE: NONE

REVISIONS		NO.	DATE	DESCRIPTION	BY
NO.	DATE				
1					
2					
3					
4					
5					
6					

REVISIONS		NO.	DATE	DESCRIPTION	BY
NO.	DATE				
1					
2					
3					
4					
5					
6					

DATE: 9-22-23  
PROJECT NO.: 3147-10  
DRAWN BY: DO  
CHECKED BY:  
SCALE: NOT TO SCALE  
CAD FILE NAME: SIDEWALK DETAILS

CITY OF DEER PARK  
SIDEWALK IMPROVEMENTS -02011  
SIDEWALK DETAILS

