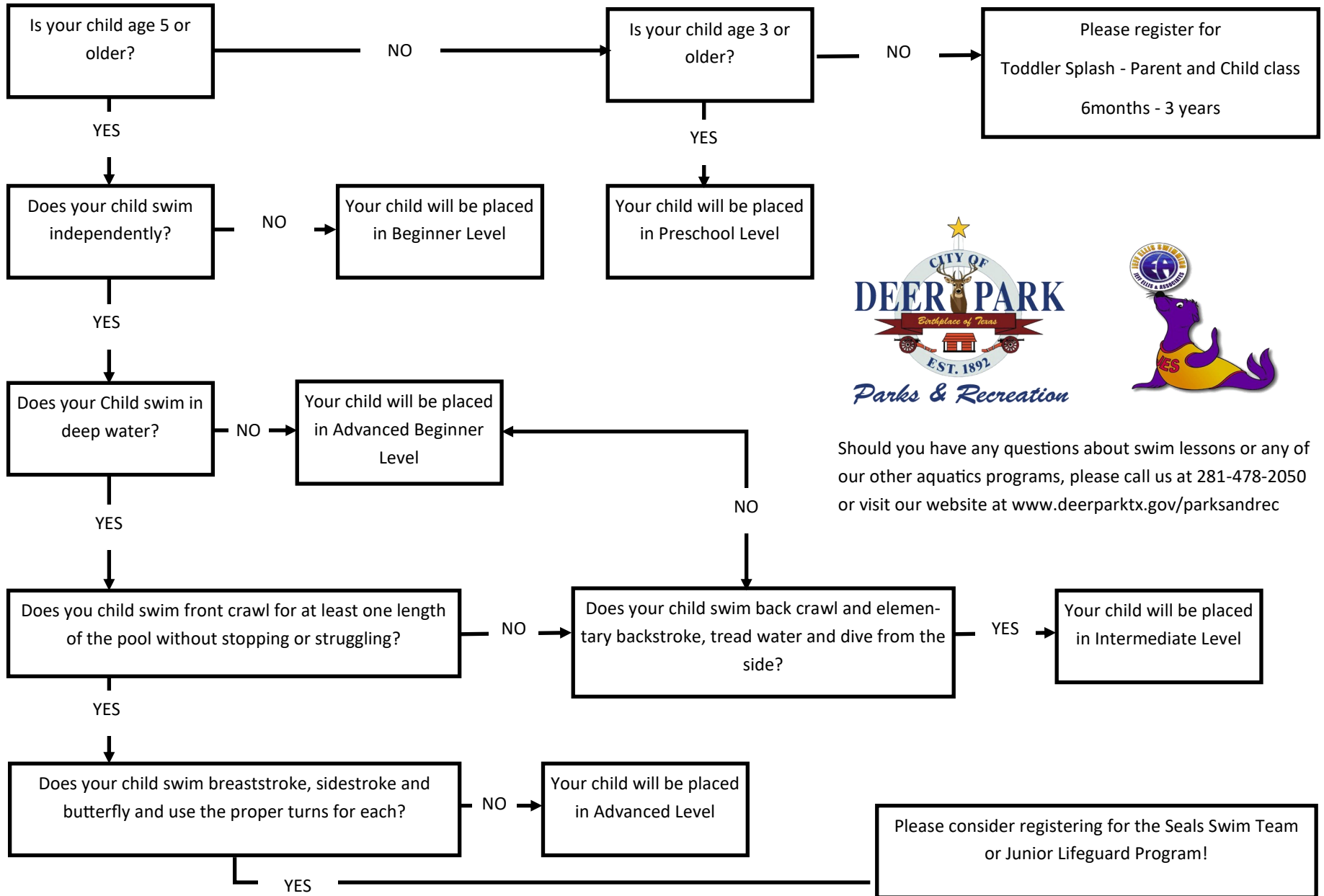


# What group swim class is right for your child?

This chart outlines the critical prerequisite skills that determine class placement. Please follow the chart to identify the class that best matches your child's skill.



Should you have any questions about swim lessons or any of our other aquatics programs, please call us at 281-478-2050 or visit our website at [www.deerparktx.gov/parksandrec](http://www.deerparktx.gov/parksandrec)